

FOCUS Program Seeks to Reduce Barriers to Colorectal Cancer Screening

Cancer affects many people, but it doesn't affect them equally.¹ **Nearly half of premature colorectal cancer (CRC) deaths are related to racial, ethnic, socioeconomic, and geographic inequalities.**² The most vulnerable patient populations often go unscreened for CRC,¹ which is one reason these communities are up to 11% more likely to be diagnosed with CRC in later stages,³ when treatment is less effective.

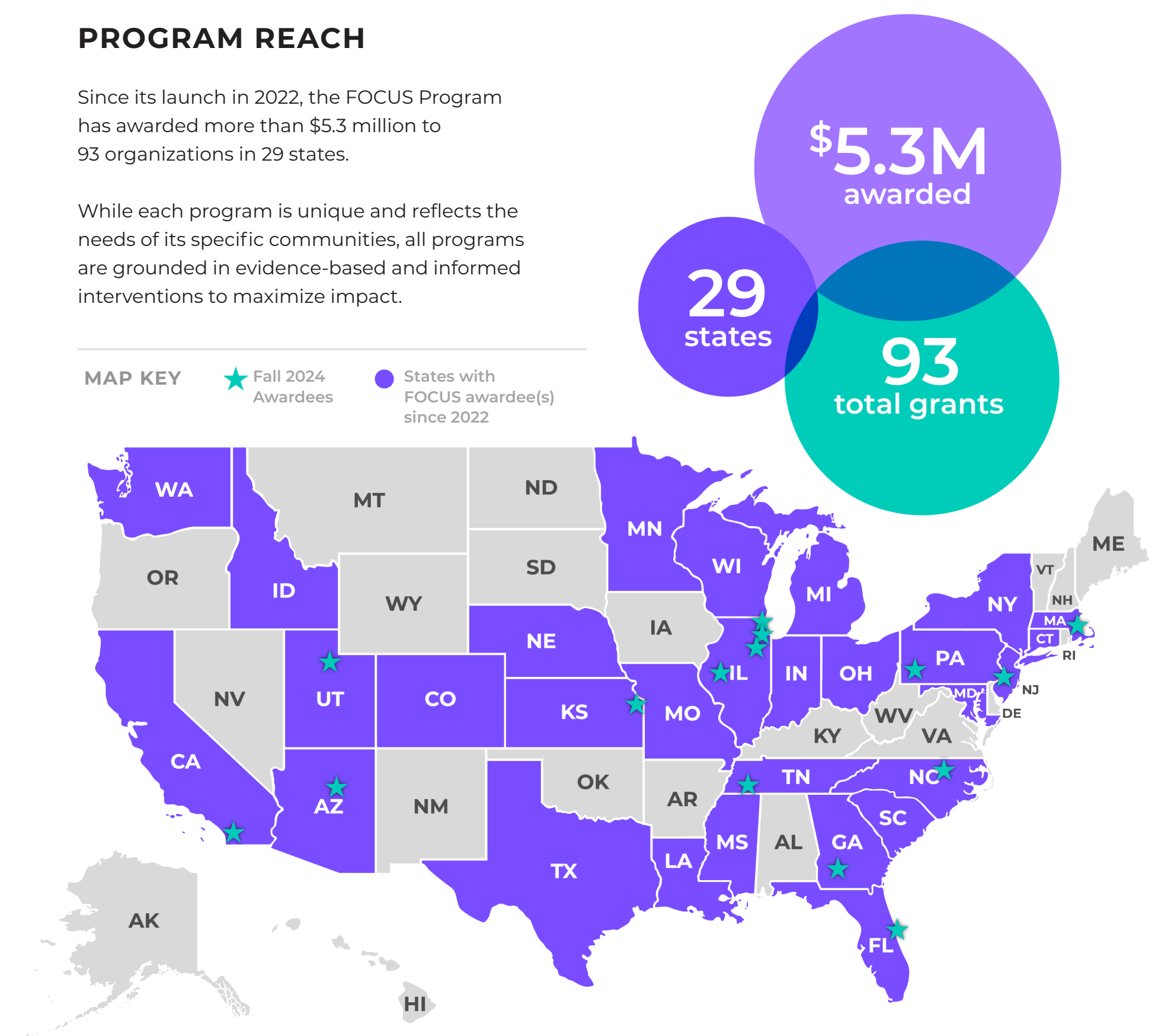
Exact Sciences is committed to overcoming barriers to care and ensuring access to our tests regardless of a patient's race, ethnicity, gender, socioeconomic status, or geographic location.

To support this mission, Exact Sciences created the **Funding Opportunities for CRC Screening Uptake Strategies (FOCUS) Program** which provides grant funding to community organizations, health foundations, public health organizations, and advocacy groups to expand access to colorectal cancer screening and create affordable pathways to follow-up diagnostic care.

PROGRAM REACH

Since its launch in 2022, the FOCUS Program has awarded more than \$5.3 million to 93 organizations in 29 states.

While each program is unique and reflects the needs of its specific communities, all programs are grounded in evidence-based and informed interventions to maximize impact.



FALL 2024 AWARDEES

- | | | |
|---|--|--|
| <ul style="list-style-type: none"> • <i>Advance Community Health, Inc.</i> • <i>Confederated Tribes of the Goshute Reservation – Sacred Circle Healthcare</i> • <i>Hardeman County Community Health Center</i> | <ul style="list-style-type: none"> • <i>Horizons Community Solutions, Inc.</i> • <i>North Country Healthcare</i> • <i>North Side Christian Health Center</i> • <i>Southern Illinois University School of Medicine</i> • <i>Tapestry 360 Health</i> • <i>TCA Health, Inc.</i> | <ul style="list-style-type: none"> • <i>Turner House Clinic, Inc., d.b.a. Vibrant Health</i> • <i>Virtua Health Foundation</i> • <i>Vista Community Clinic</i> • <i>Whittier Street Health Center</i> • <i>Whole Family Health Center, Inc.</i> • <i>YWCA Metropolitan Chicago</i> |
|---|--|--|

PROGRAM IMPACT

Across the country, FOCUS grant awardees have created a lasting impact in their local communities.

“I think the grant motivated us to come up with a solution to a problem we might’ve put on the back burner—and so far, the results have been incredible.”

— DR. KYLE KOSTER

*Assistant Professor of General Internal Medicine at
the Icahn School of Medicine at Mount Sinai
FOCUS grant recipient in 2022*

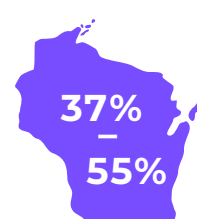
At the midcycle check-in with the 2022 awardees, 60% had already shown an increase in patient screenings and nearly all reported a meaningful focus on community education to engender a more aware and informed population.



After receiving a FOCUS grant in 2022, Community Health Network, Inc., has increased screening rates in their uninsured New York patients by 20% and in their patients ages 45-55 by 15%.



The Nebraska Cancer Coalition was able to grow screening awareness among more than 400,000 rural Nebraskans.



Access Community Health Centers, which serve a racially and ethnically diverse patient population with high poverty rates in Wisconsin, have increased screening rates from 37% to 55%.

REFERENCES

1. ACS. Cancer facts & figures 2024. Atlanta: American Cancer Society; 2024.
2. Jemal A, Siegel RL, Ma J, et al. Inequalities in premature death from colorectal cancer by state. *J Clin Oncol*. 2015;33(8):829-83
3. Ho C, Kornfield R, Vittinghoff E, et al. Late presentation of colorectal cancer in a vulnerable population [published correction appears in *Am J Gastroenterol*. 2013 Jun;108(6):1020]. *Am J Gastroenterol*. 2013;108(4):466-470.